

Capability Statement



Together We Rise

Selecting the right partner for the scaffolding and tailored access solutions for your projects plays a big role of generating positive momentum for everyone involved to complete it as safely, and as efficiently as possible, their trades, their clients, and ultimately their bottom line and reputation.

We understand the magnitude of getting this right, and elevating our construction partners so we can continue to grow and rise together.



Choosing The Right Partner



Scaffolding and creating tailored access solutions are a crucial component of any major construction project.

The stakes are simply too high to get it wrong.

Poor planning, and not getting the right expertise involved from the start is ultimately what creates the biggest problems in delaying projects and risking successful outcomes for everyone involved.

Without the correct access solution, or the wrong application of the right access solution - scaffolding companies can drastically help or hurt the efficiency of the project.

When people just view Scaffolding in isolation, and not as part of the greater fabric of getting the job done efficiently - they devalue how important it is to their own profitability, and reputation for a job completed on time, on budget, and to a high standard.



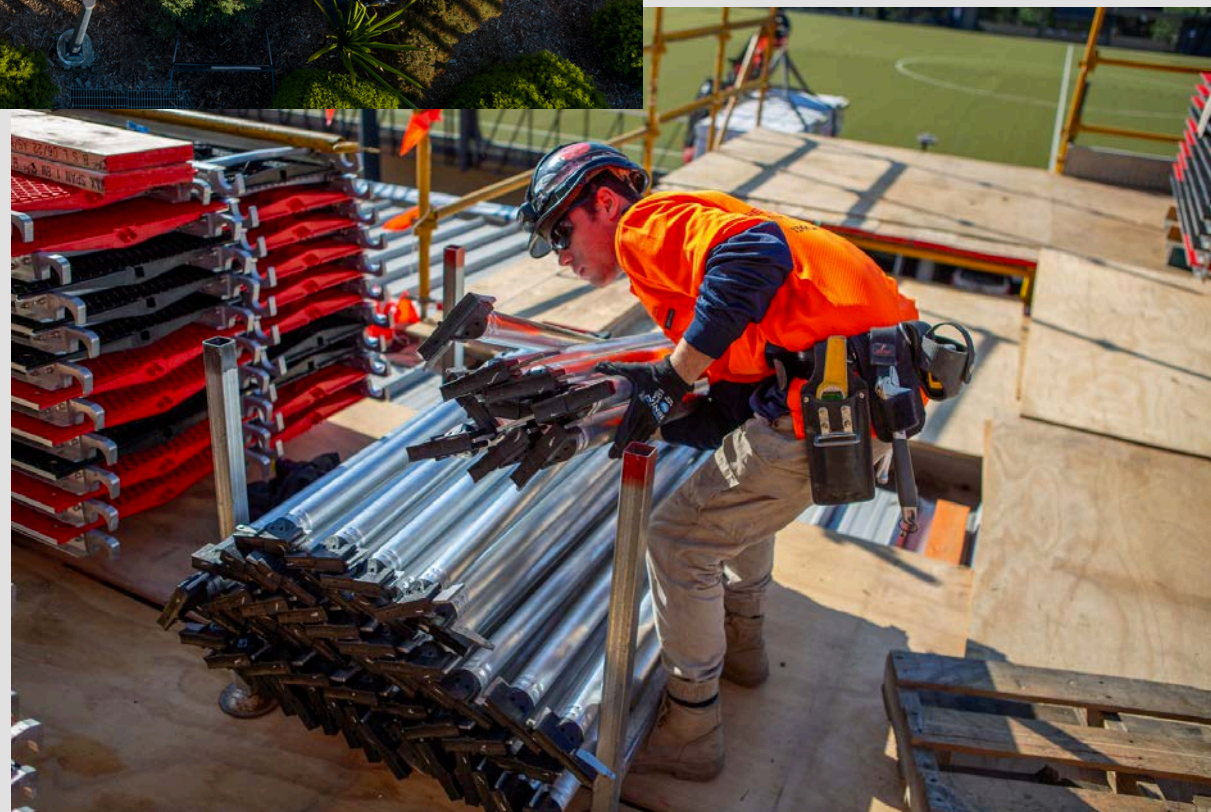
Our Keys To Success

Creating powerful partnerships is in our DNA. Over the years, we have dialled in on our keys to success so we can rise together.

Better Planning Creates Better Outcomes

Proper planning ensures we can do it the way it should be done, the right way, the first time - improving safety, and efficiency while reducing risks and costs associated with labour and equipment. This is why we get directly involved in projects as early as we can.





Our Keys To Success

Tailored Access Is More Than Scaffolding

Providing better outcomes is the driver for our constant commitment to innovation and progression within our field.

It's about implementing a solution that honours the ergonomics and stability of the workers on site.

If there is less bending , reaching, and awkward positioning, they will be more productive which has a trickle down effect across the entire project.

We strive for professionalism and efficiency in everything we do.



Our Keys To Success

New School Systems + Old School Values

We are advocates of the construction industry at large - placing an enormous emphasis on building the right relationships and creating win-win outcomes for everybody involved.

Collectively, we become part of a greater team on every project and want to make our partners look great. Decades later we still take that approach to how we work, and we continuously evolve our systems to be market leading for our unique advantage.



Our Keys To Success

Industry Leading Expertise + Equipment

We're not settling for good, we're striving for great.

That's why we have built and manufactured our own equipment in our own warehouse, with our own staff.

Compared to traditional set ups, our equipment looks and feels great on the site, and is proudly Australian owned, operated, and manufactured, with every installation being carried out by the team that created it.

When you deeply believe in your team, and your product, it only reflects positively on the project.





Manufacturing



**Safer.
Stronger.
Lighter.**

The Home Of the Taurus Transom™

In the construction industry, there is little margin for error.

Every inefficiency is magnified in the bottom line.

This is why we have such a strong belief in the importance of scaffolding and creating tailored access solutions that enable and empower people to complete their works as safely, and as efficiently as possible.

Over the last 30 years of working in the industry, and on a variety of complex projects, we saw a growing need for lighter, stronger, and safer equipment that was quicker to install, easier to transport, and took less of a physical toll on the workers.

So in 2018, we started the journey of creating the only full hybrid scaffolding system on the market. What started as an idea has now become one of our strongest points of differences.

Manufacturing

Australian made.

Australian owned and operated.

Exclusive to Premier Scaffolds.

Our equipment has been created with the strongest aluminum and polymer blend on the market, leading to a significantly lighter product that is getting substantial heavy-duty ratings that rival steel, without the downsides.

If that wasn't enough - we have created a much sleeker, and more aesthetically pleasing design, so work sites can be eye catching, rather than eye watering.



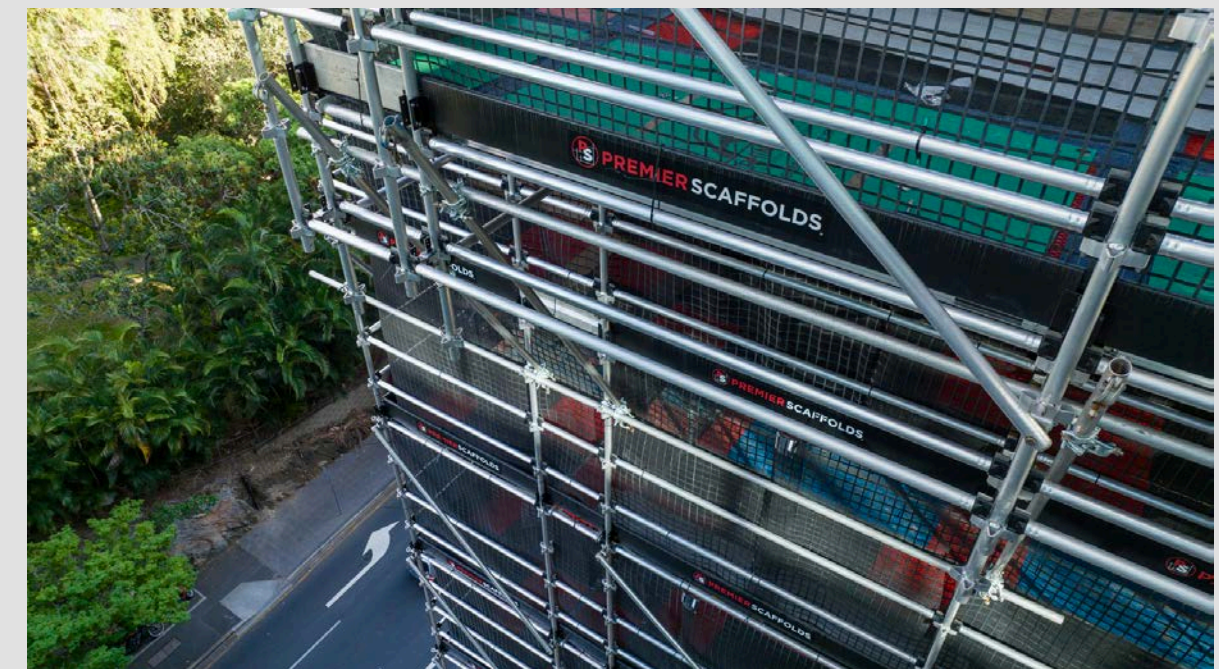
Recent Projects

University Of Queensland

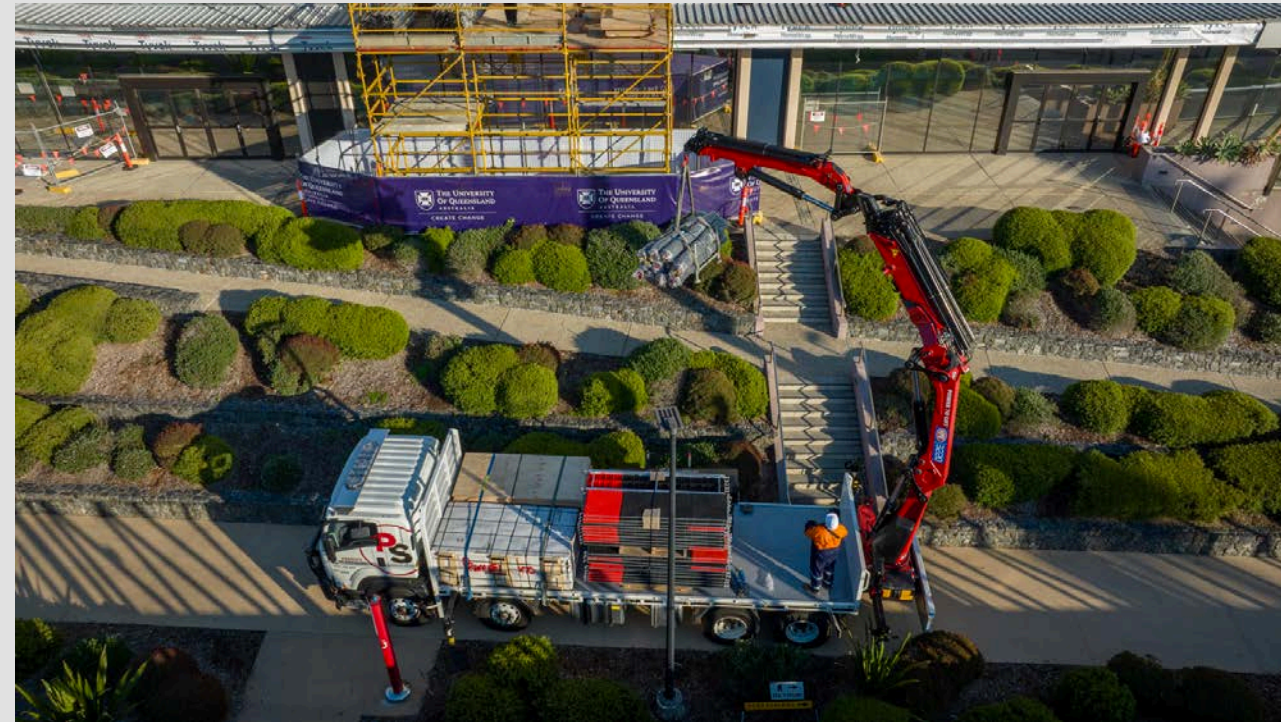
UQ is an iconic campus in Brisbane, and is highly regarded in the academic community as being one of the more desirable places to study in Australia, and across the world.

With that reputation comes beautiful, historic buildings that require restoration over time, and a bustling student population that needs to be considered throughout the process.

Premier Scaffolds was engaged for this project, understanding that our capacity and capabilities stretched beyond simple installation, it's our understanding of tailored access solutions that sets us apart, with safety, strength, and efficiency being at the forefront of our requirements every time.



University Of Queensland



By using our unique Premier Systems we were using our purpose built, lightweight equipment allowing for easy and efficient installation. Our equipment is the lightest on the market, while having the highest rating for aluminum composite, with a heavy duty rating.

In addition to what we installed, we brought additional strategic direction in how it was installed to increase safety, and productivity to reduce time on site, while improving efficiencies across the project.

This included building a loading bay on the eastside, and using our Premier Scaffolds crane to reduce erection time frame on site, and allowing the other workers to carry out works earlier and more efficiently.

Recent Projects



Seaworld, Gold Coast



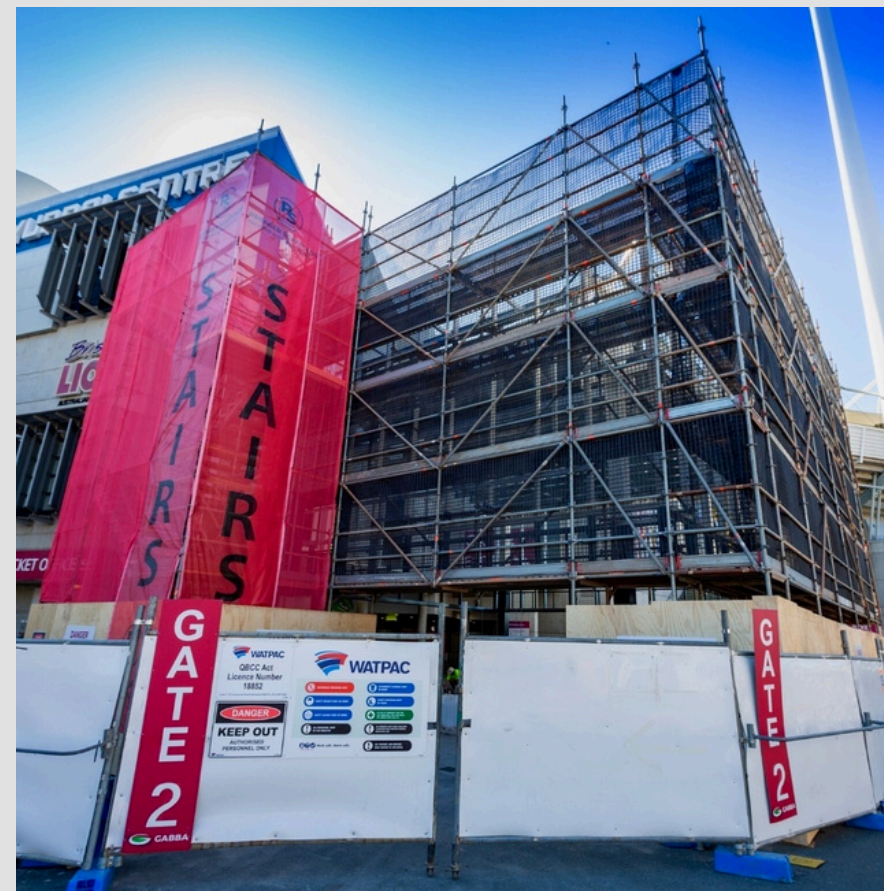
Ann Street, Brisbane CBD

Previous Projects

Please note these projects were completed before we manufactured our own equipment.



Central Station, Brisbane CBD



The Gabba



Banana Bender



Thank You

We strive to provide the right tailored access solution, with the right application, and the right materials - all created under the Premier Scaffolds banner. By being a one stop shop, we know we can deliver immense value with efficiency and professionalism always being front of mind.

We look forward to exploring this opportunity in more detail at your earliest convenience.

The Premier Scaffolds Team

1300 455 444

quotes@premierscaffolds.com.au

